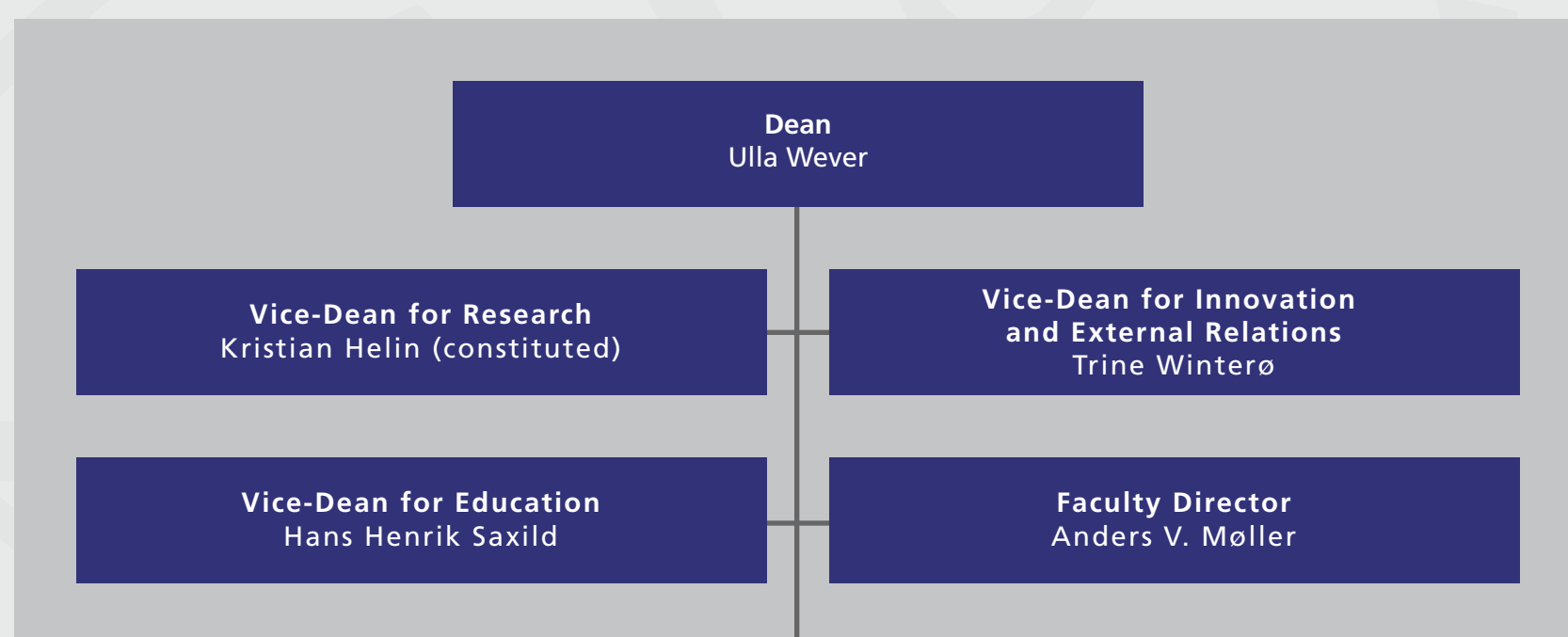


Dean's Office



FACULTY SERVICES

Department	Head of Department
Department of Biomedical Sciences	Bente Merete Stallknecht
Department of Cellular and Molecular Medicine	Ole William Petersen
Department of Immunology and Microbiology	Carsten Geisler
Department of Forensic Medicine	Niels Lynnerup
Department of Public Health	Steffen Loft
Department of Odontology	Anne Marie Lyng Pedersen
Department of Clinical Medicine	Jesper Hastrup Svendsen (constituted)
Department of Pharmacy	Flemming Madsen
Department of Drug Design and Pharmacology	Ole Thastrup
Department of Veterinary Clinical Sciences	Asger Lundorff Jensen
Department of Veterinary and Animal Sciences	Birgit Nørrung
Department	Department Manager
Department of Experimental Medicine	Jann Hau
Centre	Director
The Novo Nordisk Foundation Center for Protein Research	Jiri Lukas
The Novo Nordisk Foundation Center for Basic Metabolic Research	Juleen R. Zierath
The Novo Nordisk Foundation Center for Stem Cell Biology	Tor Henrik Semb
Center for Neuroscience	Steven Goldman
Biotech Research and Innovation Centre	Kristian Helin
School	School Director
School of Oral Health Care	Bo Danielsen